

Temporary Notice To Mariners

Carnarvon Dredging Works - Fascine Channel

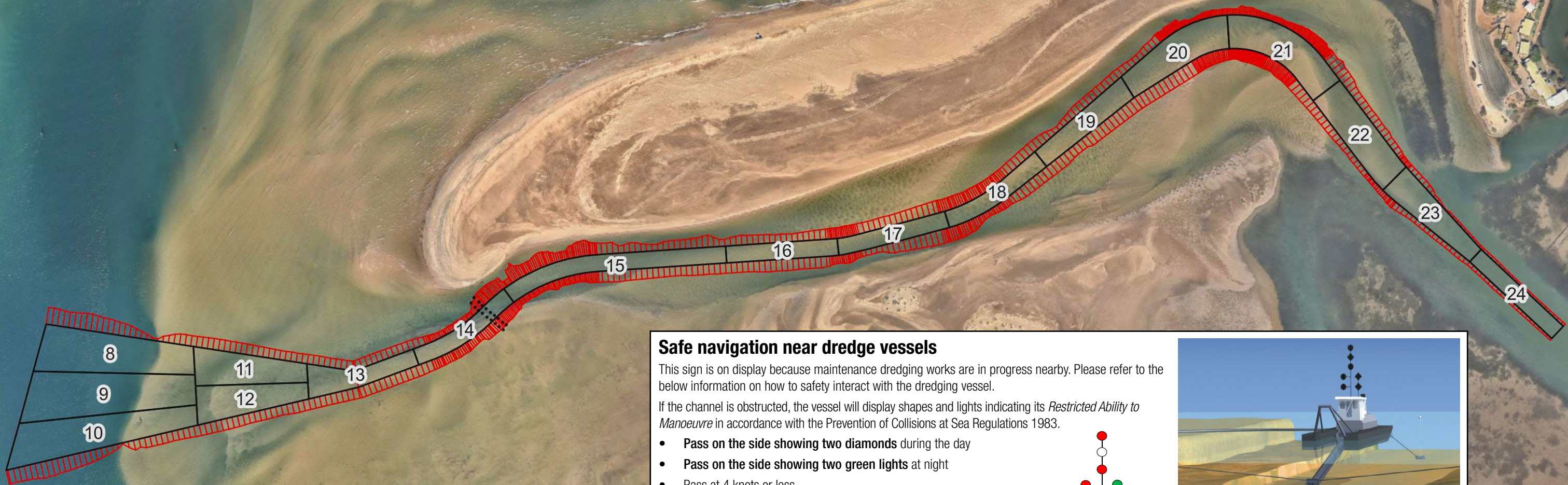


Scale in metres

Temporary Notice To Mariners

Mariners are reminded to keep out of the way of the dredge and are requested to maintain a minimum distance of 100m to avoid her cables.

During those time the dredge is within segments 16-19 as per the attached plan, the channel will not be navigable. Anticipated dates of works in this area are from mid-October to the end of November.

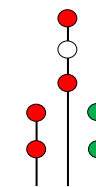


Safe navigation near dredge vessels

This sign is on display because maintenance dredging works are in progress nearby. Please refer to the below information on how to safely interact with the dredging vessel.

If the channel is obstructed, the vessel will display shapes and lights indicating its *Restricted Ability to Manoeuvre* in accordance with the Prevention of Collisions at Sea Regulations 1983.

- **Pass on the side showing two diamonds** during the day
- **Pass on the side showing two green lights** at night
- Pass at 4 knots or less
- Pass close and to the side of the dredge
- Never approach within 100m directly astern (rear) of the dredge
- Be aware of the dredge pipeline to the stern of the dredge and subsequent pathway marked by buoys and lights.
- Be aware the pipeline may move, and submerged sections may re float during operations.



For specific information about the navigational hazards please refer to the Temporary Notice to Mariners on DoT website.

If unsure what to do, Contact the dredge on VHF Radio Channel 16 or 74

For more information about the dredging project contact the DoT email on dredging@transport.wa.gov.au

